



Local Safeguarding Children Board

Annual Report 2012-2013



"The West Berkshire Local Safeguarding Children Board was established in 2004, as a major element in the Every Child Matters Change for Children agenda and in support of the five key outcomes with a particular focus on staying safe."

Essential information

If you require this information in an alternative format or translation, please call Ros Haynes on **01635 503159**

West Berkshire LSCB
West Street House
Newbury
Berkshire RG14 1BZ

Please ask for: Ros Haynes, LSCB Business Manager
Telephone: **01635 503159**
E-mail: rhaynes@westberks.gov.uk
Website: www.westberksLSCB.org.uk

Author: Ros Haynes, LSCB Business Manager
Date published: October 2013

© West Berkshire Council

Foreword by Independent Chair

Safeguarding Children is everyone's responsibility. It is vital that partners across all agencies who work with children, young people and families in West Berkshire work together to ensure that children and young people are safeguarded and achieve good outcomes.

The LSCB has a statutory duty to co-ordinate how agencies work together to safeguard and promote the well-being of children and young people in West Berkshire and to ensure the effectiveness of local safeguarding arrangements.

This year has seen the publication of revised government guidance on safeguarding within Working Together 2013. This retains an emphasis on safeguarding being everyone's responsibility and the essential requirement for agencies providing services to both children and adults to work together to safeguard children and promote their welfare. The guidance re-affirms the role of LSCBs in ensuring all agencies work effectively together.

Working Together 2013 requires the Chair of the LSCB to publish an annual report on the effectiveness of safeguarding arrangements and setting out how well agencies promote the welfare of children in the local area. This report aims to provide an overview of the performance and effectiveness of local services. It identifies areas of weakness, the causes of weaknesses and the action being taken to address them as well as other proposals for action. The report is presented to the Chief Executive of West Berkshire Council, the Lead Member, Chair of the Health and Well-Being Board and the Police and Crime Commissioner. It is also formally reported to the Boards of the local Health Trusts. It is intended for a wide audience including the professional workforce and local communities

West Berkshire benefits from a strong commitment to partnership working from all agencies in the area, and a very good understanding of the benefits of early intervention and prevention in relation to safeguarding. These are key to effective practice and the LSCB is committed to continuously developing these aspects.

Each agency has been asked to provide its own assessment of performance; these are summarised in the Report, along with contributions from sub groups which undertake a significant amount of the work of the Board. The report presents a mixed picture, all public sector agencies are facing reduced funding and many are implementing new structures with a loss of key posts and experienced post holders. New commissioning arrangements are in place in many service areas and the Board is aware that any period of major organisational change presents additional risks. There is however a commitment among all agencies to prioritise safeguarding and to ensure the LSCB is an effective body.



Stephen Barber, Independent Chair

Contents

Executive summary and key messages	4
Local background and context	7
Governance and accountability arrangements	9
Engagement with children and young people	12
LSCB Business Plan	12
Effectiveness of safeguarding arrangements over the past year	14
● LSCB	
● West Berkshire Council	
● CAFCASS	
● Thames Valley Police	
● Health Services	
● Schools	
● Youth Offending Team	
● Thames Valley Probation Service	
● Voluntary sector	
Sub Groups and Task Groups	23
Conclusions	26
Appendices:	
A Child Protection data	27
B Training information	31
C LSCB membership	32
D Financial information	33
E List of acronyms	34

Sub-group reports are available on request from the LSCB Clerk cfletcher@westberks.gov.uk

Executive summary and key messages

The West Berkshire Annual Report provides an insight into the work done locally to safeguard children. The report demonstrates the effectiveness of the work undertaken and highlights areas for development and change.

The LSCB has been operating within a challenging context over the last year, as the public sector and NHS have undergone significant changes due to shifts in political expectations and funding. This has impacted on many services including those delivered by the voluntary sector.

Against this background, the LSCB is working to increase its effectiveness by focussing on outcomes for children and young people.

Messages for Local Politicians

- Local politicians face difficult choices balancing budgets and reducing the workforce accordingly. They must ensure that reductions in staffing do not jeopardise the allocation of effective resources to safeguarding and promoting children's welfare.
- Local councillors must ensure they maintain a strategic oversight and leadership role of all those services that promote children's welfare including those in schools and the voluntary sector.
- They must continue to promote inter-agency working particularly through the Health and Wellbeing Board, Community Safety Partnership and the Local Safeguarding Children Board.
- Through their links with local communities they must ensure community concerns about safeguarding and children's welfare are brought to the attention of all those with duties to respond.

Messages for Chief Executives and Directors

- Senior officers must ensure that their workforce is able to participate in LSCB safeguarding training, to attend training courses and learning events.
- Every agency's contribution to the work of the LSCB must be categorised as the highest priority in the allocation of time and resources.
- The LSCB needs to understand the impact of any organisational restructures on the capacity to safeguard children and young people in West Berkshire.
- Performance information needs to be produced and contextualised to demonstrate the effectiveness of safeguarding within services.
- Ethnicity and disability information needs to be used in a strategic context to commission relevant services.

Messages for the West Berkshire community

- Children and young people – your voices are the most important of all;
- We all share responsibility for protecting children. If anyone is worried about a child, they should do something – seek advice or contact the Council's Referral and Assessment team or an agency like the NSPCC – our website will help you.

Messages for the local media

- Communicating the message that safeguarding is everyone's responsibility is crucial to the LSCB's work and the local press and media are ideally positioned to help do this.
- The local media has a role in safeguarding children and young people through raising public awareness about child abuse and domestic abuse.

Messages for the children's workforce

- All members of the children's workforce, from all agencies and the voluntary sector, should use safeguarding courses and learning events to keep them in touch with lessons learnt from research and best practice.
- All members of the children's workforce, both paid and voluntary, should be familiar with the role of the LSCB and Berkshire child protection procedures.

[Link: Berkshire LSCB Child Protection Procedures](#)



Messages for Thames Valley Police

- Ensure adequate attendance at initial Child Protection Case Conferences.
- Ensure that referrals into Children's Social Care take account of the thresholds for statutory intervention.
- Ensure work with the Local Authority on domestic abuse remains a priority.
- Continue to improve identification of risk in domestic abuse cases.
- Ensure that police officers receive safeguarding training appropriate to their level and evidence this.
- Ensure police officers are able to participate in multi agency training events.
- Continue to improve responses to child sexual exploitation and the identification of risk when children and young people are reported missing.

Messages for Thames Valley Probation

- Find ways of demonstrating that the Multi-Agency Public Protection Arrangements (MAPPA) and the Multi-agency Risk Assessment Conferences (MARAC) protect children from harm and promote children's wellbeing.
- Continue to support the work with children of prisoners or in contact with offenders.

Messages for Berkshire Healthcare Foundation Trust

- Continue the work to ensure looked after children receive the best health services.
- Implement the family nurse partnership service for teenage mothers and demonstrate its effectiveness.
- Promote the think family approach within adult mental health services.
- Participate in developing early help services, ensuring health visitors and school nurses understand thresholds for statutory intervention and where to get help for families whose needs do not merit a statutory intervention.

Messages to Clinical Commissioning Groups

- Participate in the ongoing development of multi-agency partnership working to safeguard children.
- Complete Section 11 self audits.
- Ensure all commissioned services are monitored to ensure they meet safeguarding standards and to share health safeguarding data with LSCBs.

Messages to Schools in West Berkshire

- Continue to complete the annual S11 audits.
- Work with other agencies to support the Domestic Abuse Champions project.
- Support the LSCB in raising awareness of child sexual exploitation.
- Ensure all staff are recruited safely.
- Ensure all staff are appropriately trained.



Local background and context

West Berkshire covers a geographical area stretching from Hungerford in the West to Calcot in the East.



West Berkshire Population Profile

The 2011 Census showed West Berkshire with a population of just under 154,000.

The number of young people under 18 in West Berkshire was 37,250.

Between 2001 and 2011, the number of 0-9 year olds has increased at about the same rate as elsewhere, at around 4%. This means there are just short of 1,400 more people aged 0-19 living in the district compared to 2001.

Within this, there has been a more significant increase in pre-school aged children (14%), reflecting a national trend and suggesting a mini 'baby boom'.

The latest population projections by the Office for National Statistics (2011) estimates the number of 0-19 year olds living in West Berkshire to have grown by 4876 by 2021 (13%). This compares to an expected growth rate for the South East and England as a whole of 8%.

The 2011 Census shows that when compared nationally, there is a significantly lower proportion of people in West Berkshire who define themselves as coming from a black or minority ethnic (BME) background- 5% of West Berkshire residents as a whole, compared to 14% of people in England and Wales more generally.

The largest increase in ethnic group over the last decade is 'Asian or Asian British', an increase of 1.7%, compared to an increase twice that in England and Wales.

91% of people in West Berkshire were born in the UK, compared to 87% nationally.

1.4% of the population in West Berkshire were born in one of the EU accession countries (Malta, Cyprus, Estonia, Latvia, Lithuania, Poland, Czech Republic, Slovakia, Slovenia, Hungary, Bulgaria and Romania), equating to just over 2,000 people. This compares to 2% of the population nationally. Aside from the UK, the most common countries of birth are India, Poland, South Africa, Ireland and Germany.

Deprivation levels in West Berkshire are generally low - the Department for Communities and Local Government's (CLG) Indices of Multiple Deprivation (IMD) ranks West Berkshire as 288 out of 326 local authority areas i.e. the 38th least deprived district in England.

Child Poverty is also low in West Berkshire at 10.8% for children aged under 16 years compared with the national average of 21.6%

Details taken from the West Berkshire District Profile, the Joint Strategic needs assessment and the Anti Child Poverty Strategy. These documents can all be found via the West Berkshire Council website <http://www.westberks.gov.uk/>

Major Factors Influencing the Work of the LSCB

Changes in the NHS

Throughout the year, health services both nationally and locally were anticipating major structural changes: the creation of NHS England regional commissioning teams, local Clinical Commissioning Groups and the dissolution of primary care trusts. New relationships are being formed with local GPs and there is a NHS Accountability and Assurance Framework 2013 that sets out safeguarding children requirements for the new structure. The Board ensured that it worked to influence and prepare for these changes and any subsequent impact on service planning and delivery.

Funding

All public sector organisations face resource restrictions with new challenges locally in relation to a rising child population.

Child sexual exploitation (CSE)

2013 saw major criminal trials nationally relating to incidents of child sexual exploitation with a heightened public awareness of this crime. Research indicates a significant under reporting of childhood sexual abuse. All agencies need to improve performance in this area and the LSCB has worked hard locally to establish systems and services that drive the CSE agenda forward on the key fronts of prevention, protection and prosecution.

West Berkshire has established both an operational and a development (strategic) CSE group. Their role is to identify and map numbers of young people who are at risk of exploitation. The wider remit of the groups is to raise awareness amongst practitioners, young people and the public.

The Munro Review of Child Protection

West Berkshire set up the Munro Implementation Board in early 2012 to lead on changes to transform Children's Services in accordance with the recommendations made by Professor Eileen Munro in her final report *Reviewing the Child Protection System*, published in 2011.

Key Achievements:

- Developing a new Social Worker Career Progression Structure designed to improve recruitment and retention of frontline Social Workers and Managers.
- Starting to make significant improvements to our Early Help Pathway.
- Designing and implementing a Quality Assurance Strategy for Children's Services.

Governance and accountability arrangements

Background

LSCBs came into existence as a result of Lord Laming's Victoria Climbié Inquiry. They were established to replace the former Area Child Protection Committees and to ensure a more co-ordinated and robust senior management multi-agency approach to safeguarding children.

Statutory objectives and functions of LSCBs

Section 13 of the Children Act 2004 requires each local authority to establish a Local Safeguarding Children Board (LSCB) for their area and specifies the organisations and individuals (other than the local authority) that should be represented on LSCBs.

Local Safeguarding Children Boards Regulations 2006 set out the range of roles and statutory functions for the board including developing local safeguarding policy and procedures and scrutinising local arrangements. The statutory objectives and functions of the LSCB are described below:

- (a) to coordinate what is done by each person or body represented on the Board for the purposes of safeguarding and promoting the welfare of children in the area; and
- (b) to ensure the effectiveness of what is done by each such person or body

LSCB Chair, accountability and resourcing

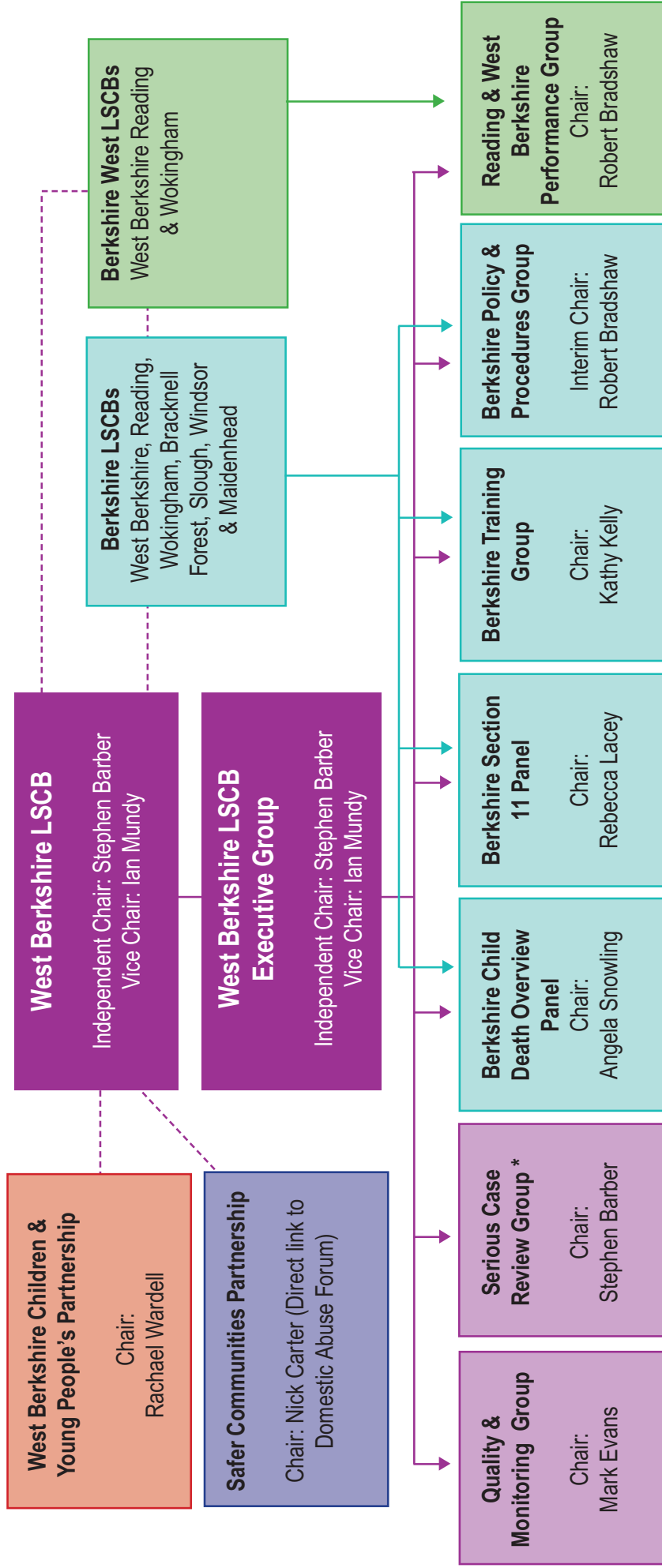
Working Together 2013 states that, in order to provide effective scrutiny, the LSCB should be independent. It should not be subordinate to, nor subsumed within, other local structures.

The West Berkshire Chair, Stephen Barber, is independent of the agencies so that the LSCB can exercise its local challenge function effectively. The chair has a crucial role in making certain that the LSCB operates effectively and secures an independent voice for the LSCB. Stephen also chairs the Reading and Wokingham LSCBs to support joint working and consistency across agencies. To ensure effective communication between the LSCB and other partnerships the chair also attends the Health & Wellbeing Board annually together with the Children & Young People's partnership and works closely with the chair of the West of Berkshire Safeguarding Adults Partnership Board.

In order to meet its objectives, the LSCB has several sub-groups, each of which is accountable to the LSCB and produces a workplan which is monitored.

An overview of the work of the sub-groups can be found on pages 23-24.

West Berkshire Local Safeguarding Children Board Structure



Task and Finish Groups:
 Child Sexual Exploitation Group
 E-Safety Group
 Safer Recruitment Group

* From April 2013 the Serious Case Review Group has changed name to the Case Review Group

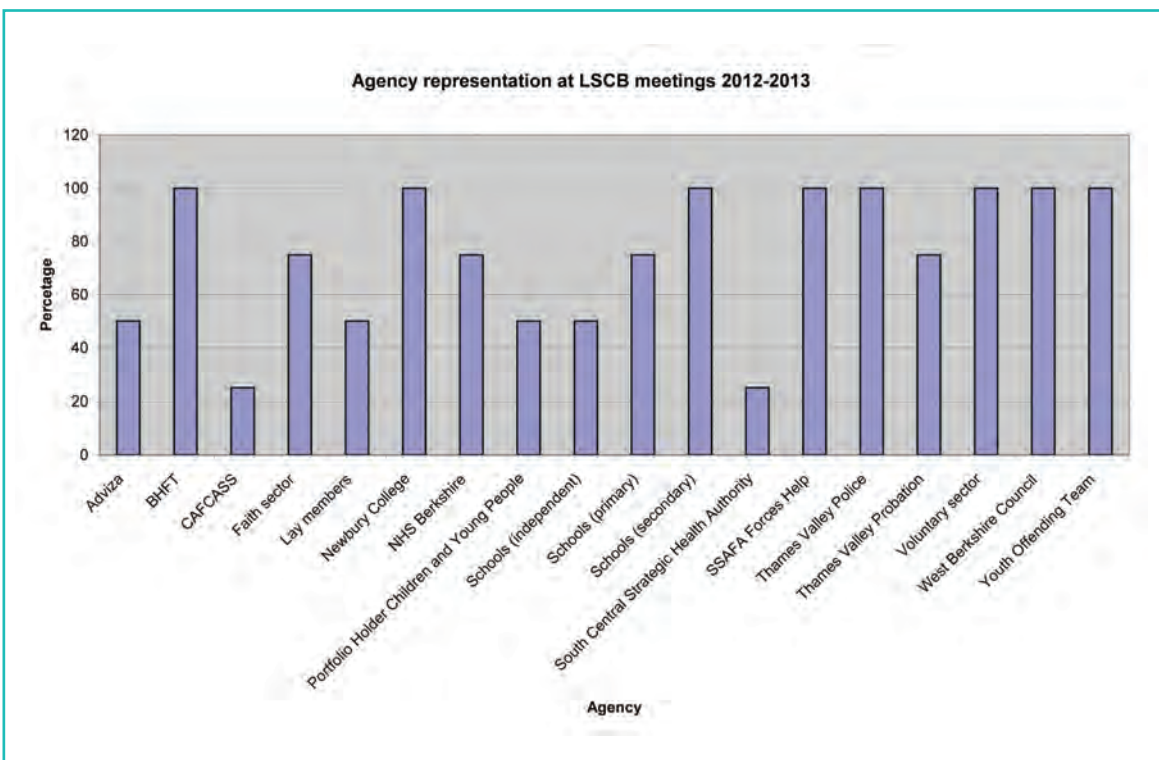
Membership/Attendance

LSCB members have a responsibility to attend all meetings and disseminate relevant information within their agency. Membership records are monitored to ensure attendance is regular and at an appropriate level. These records are presented to members on an annual basis as part of the LSCB's quality assurance process.

There have been a number of membership changes over the past year, particularly as a result of changes in the health service. Strenuous efforts have been made to ensure appropriate representation and continuity.

Attendance in West Berkshire is generally very good and, if a member is unable to attend, they are asked to send a deputy to ensure all messages are disseminated to each agency. Any lack of agency attendance is addressed directly by the Business Manager or escalated to the Chair.

Attendance figures by agency, based on four meetings held from April 2012–March 2013, are shown below.



(NB. South Central Strategic Health Authority attended one meeting by prior arrangement).

Engagement with children and young people

The LSCB recognises the importance of listening to children and young people, particularly about safeguarding.

The Board has good evidence that the views of particularly vulnerable children and young people are being sought when they are in the Council's care, with extracts being included in an annual report to the Board. There is also two way communication with the Young People's Forum, with a regular item on the Board agenda to ensure that relevant information is passed on.

In addition, a local young carer was invited to give a presentation to a Board meeting earlier in the year. She gave an insight into her personal experience alongside information on the services provided by the Young Carers Support Service.

LSCB Business Plan

The current three year Business Plan 2011-2014 is in its final year. The Plan has multi-agency actions and represents work from most LSCB partners. West Berkshire LSCB priorities are:

Domestic abuse

Ensuring that professionals have a good understanding of domestic abuse has been a priority in the Business Plan. An e-learning domestic abuse training package has been developed, which has been completed by over 400 staff since it was launched in December 2012. Information sharing has also been prioritised, with work currently underway on sharing domestic abuse information with schools.

Substance misuse

Parental substance misuse has been a concern amongst professionals and, in child protection conferences held, 22% of the parental factors for the children coming to conference were due to parental alcohol misuse; 26% were due to parental drug misuse.

LSCB member agencies are working together to improve outcomes for young people in relation to both adult and young people substance misuse. This has included obtaining a coherent view on the numbers of young people admitted to hospital and other settings in relation to alcohol, to highlight the impact both on the young people themselves and the resource implications for the services which support them.



Early intervention

The effectiveness of early intervention services have been reported into the Board over the past year. These have included reports on the Common Assessment Framework, the Child Sexual Exploitation Development Group, the Turnaround Families Programme and the Munro Implementation Board.

LSCB Governance

The LSCB regularly carries out self-assessments with its members to assess its effectiveness and identify areas for improvement. A survey of front-line practitioners to assess their understanding of the LSCB is also carried out on an annual basis. Work to ensure the LSCB sub-groups are operating effectively is also underway.

The full Business Plan 2011-2014 can be viewed on the LSCB website www.westberkslscb.org.uk



Effectiveness of safeguarding arrangements over the past year

LSCB

LSCB Achievements

- **Scrutiny** of key agencies' performance on their activities to protect children;
- Review of regular monitoring reports and performance data on key issues and the work of specific agencies through the **Quality Assurance** framework. This includes reports and data on :
 - missing children,
 - elective home education,
 - school exclusions,
 - private fostering,
 - Multi Agency Public Protection Agency (MAPPA) process,
 - Multi-Agency Risk Assessment Conference (MARAC) system,
 - school nursing service;
- Scrutiny of **multi-agency audits and action plans**;
- The Board has prioritised work on **domestic abuse, substance misuse, early intervention** and ensuring robust and effective **board functioning**;
- Commenting on the Government's proposals for the revised **Working Together (2013)** and Serious Case Review Framework and preparing for its implementation;
- **Child Protection Procedures** have been subject to change following the publication of 'Working Together 2013'. The Policy and Procedures Sub-Group are working hard with our provider to ensure the on-line procedures are up to date, easily accessible and easy to understand;
- Continued scrutiny of agency compliance with the **Section 11** (Children Act 2004) standards for agency safeguarding systems – including initiating audits of local schools, early years and the Local Authority;
- A significant amount of work has been undertaken on **child sexual exploitation**. West Berkshire has been able to use information and lessons learnt from our Oxfordshire neighbours to help inform our work. LSCB members were given a presentation by a member of the Kingfisher Team on their work together with a video of 'My Dangerous Loverboy'. Plans are underway for the autumn to raise awareness through performances in West Berkshire secondary schools of the play 'Chelsea's Choice' by AlterEgo Creative Solutions Ltd.
- Thames Valley LSCBs are working with our local **Sexual Abuse Referral Centre (SARC)** and commissioners to agree a protocol to promote better communication and have clear arrangements for reporting and information sharing.
- The **Child Death Overview Panel (CDOP)** meets regularly to review child deaths in the Berkshire area and advises the LSCB of any trends or patterns in relation to these deaths. A regular newsletter is sent to all LSCBs who disseminate it to raise awareness of issues. A recent spotlight has been on safer sleeping, with CDOP raising awareness in its newsletter and re-circulating copies of the Department of Health leaflet 'Reduce the risk of cot death', as part of a campaign targeted at health professionals and parents. There has been a significant reduction in the number of deaths throughout Berkshire due partly to high risk neo-natals being transferred to Oxford as part of a new process.

- There have been no Serious Case Reviews in West Berkshire since 2008; however the **Case Review Group** regularly meets to look at regional and national cases to discuss learning points. The group has also been looking into alternative models to carry out partnership and serious case reviews and has been working with the Safeguarding Adults Partnership Board to obtain their views on a recent case where they used the Social Care Institute for Excellence (SCIE) model;
- Implementation of the revised **safe recruitment process** following changes to the national Criminal Records Bureau. It also established a Safer Recruitment working group to ensure satisfactory implementation of the Protection of Freedoms Act 2012;
- In February, two events were held to raise awareness of the changes to the **Disclosure and Barring Service**, both events were well attended with over 100 people from all sectors at each event. Additional ongoing work is being carried out with the voluntary sector;
- Expanding the LSCB **training** programme to meet the demand of new initiatives;
- A new **domestic abuse e-learning** programme has been purchased and used by over 400 staff and volunteers in West Berkshire since its launch in January 2013.
- A successful **conference** was held in September 2012 with over 100 adult and children's services staff present; the focus was on neglect - its effects on children and impact in adulthood.

LSCB Challenges

- Working Together 2013 requires LSCBs to monitor the provision of **early help** to children and young people. There are a range of services available locally but pathways into services are not always clear and a strategic overview is necessary to identify gaps and to ensure that services are confident in delivering effective services despite reduced funding in the future;
- LSCB sub-groups carry out a significant amount of work on behalf of the LSCB; ensuring there is adequate membership from agencies to carry out this work is an on-going challenge;
- Some agencies already provide **performance data** but this should be developed to ensure all partner agencies are providing reliable data;
- There is a need to ensure Board members disseminate information throughout their agencies;
- The Board has continued to press for a **designated doctor** and improvements to the Rapid Response service following the death of a child;
- The Board continues to scrutinise the provision of health services to **Looked After Children** since concerns were raised over the timeliness of their medical assessments;
- There remains a continuing challenge for Thames Valley Police in finding **resources to attend initial and review child protection conferences**. This issue is regularly monitored by the Board;
- Reductions and changes for people in receipt of working age **welfare benefits** are likely to increase stress on already vulnerable families and leading to an increase in demand for services.

Partner agencies safeguarding effectiveness

West Berkshire Council

West Berkshire Council Achievements

- **Adult Social Care and Housing Operations** continue to work closely with Children's Services to ensure children's concerns and considerations are passed on and acted upon appropriately. This year has seen further embedding of Children's Safeguarding protocols and training within the services along with awareness raising with the Adult-focused teams;
- The **Turnaround Families Project** targets families with a range of problems experienced over some time and aims to ensure all agencies work together closely to reduce the impact of those problems. Confirmation of this year's funding has been received, endorsing the programme so far;
- West Berkshire has established both an operational and a development (strategic) **Child Sexual Exploitation** group. Their role is to identify and map numbers of young people who are at risk of exploitation. The wider remit of the groups is to raise awareness amongst practitioners, young people and the public.
- West Berkshire Council has signed up to the Children's Society **Runaways' Charter** and contributed to the Make Runaways Safe progress report;
- A small working group was set up to look at the increasing use of **controlled substances**;
- **Safeguarding training** is delivered to school/settings staff and designated persons;
- **The Early Years Quality Assurance Team** was pleased to see one of West Berkshire's Childminders picked out in an Ofsted Good Practice Report;
- **Domestic abuse multi-agency events** have been held to gain an understanding of what services are available and how these work together, these have been well attended and run by the Domestic Abuse Co-ordinator through the Domestic Abuse Forum. One of the highlights of the last year was drama performances in local secondary schools developed by young people. The Local Authority Overview and Scrutiny Management Commission also carried out a review of domestic abuse provision which has led to more focus and renewed activity in this area by all agencies.
- **The Domestic Abuse Response Team** which started off as a pilot has now become established.
- A protocol was developed, covering service provision to young people who are aged 16/17 years and who are **homeless** or at risk of homelessness.
- The **Munro Implementation Board** has been leading on changes to transform Children's Services in accordance with the recommendations made by Professor Eileen Munro in her review of child protection.

West Berkshire Council Challenges

- There has been a steady increase in the numbers of **Looked After Children (LAC)**, leading to capacity issues;
- There continues to be an issue with **LAC medicals** which the Council is working to address with health partners;
- An audit carried out by the Quality and Monitoring Sub-Group revealed that the **CAF system** is not working as well as it should;
- **Munro Implementation Group** - good progress has been made in implementing the action plan following the Ofsted inspection last year. There has been real progress in auditing case records to improve timeliness of interventions leading to increased child protection and looked after children activity. Likewise there has been excellent progress in preventing looked after children becoming involved in the criminal justice system. However there are still areas to work on in relation to staffing and capacity;
- Following changes to the **Family Group Conference (FGC)** arrangements locally, there was a decrease in the number of FGCs held. An action plan has been put in place to address this and the service is being heavily promoted;
- Education Service plans for the coming year include re-establishing the exclusions Drugs Protocol to reduce fixed and permanent exclusions in secondary schools, developing a Tier Two mental health/anxiety project and promoting 'healthy children' (funding is being sought for a 'healthy adviser' post in schools).

Children and Family Court Advisory and Support Service (CAFCASS)

CAFCASS Achievements

- West Berkshire is at the national average for duration of public law cases, at 45 weeks. However, this is above the Public Law Outline target of 26 weeks.

CAFCASS Challenges

- There have been fluctuations in the number of private law applications, affected by changes to Legal Aid funding for private law.



Police Achievements

- Safeguarding continues to be a key priority for Thames Valley Police and the 2013-14 period will see additional training for all frontline officers.
- The police have worked extensively over the past year to create improved responses to **child sexual exploitation (CSE)**; they now have a fully developed CSE strategy and accompanying action plan, which have been communicated to key partners including chairs of LSCBs and heads of children's social care;
- The action plan includes the interim recommendations from the Office of the Children's Commissioner report into CSE published earlier this year;
- Ongoing work is taking place around **domestic abuse**. This is particularly relevant to children's social care which requires good quality risk assessments from the police in order to plan appropriate responses;
- The funding of **Making Changes** Perpetrator programme was secured with assistance from the police;
- An audit of the MARAC process, through the Co-ordinated Action Against Domestic Abuse self-assessment, was completed, showing a low repeat referrals rate; a MARAC Steering Group will be formed;
- The **Safer Schools Programme** provides information to Years 4, 5 and 6 on key issues, including being a good citizen, general and on-line safety and child exploitation;
- The **Secondary Schools Programme** has provided sessions in all West Berkshire secondary schools, Pupil Referral Units and Newbury College, with a focus on on-line safety and including general safety, bullying and the law, as well as child exploitation.

Police Challenges

- Increased volume of investigations and risk associated with **CSE**;
- Recruitment and retention issues have had a temporary impact on their ability to provide **reports to Child Protection Conferences**. Recruitment is underway to address this;
- Improvements are required in management of **missing children**, particularly the 'return to home' interviews.



NHS Berkshire (Primary Care Trust) and South Central Strategic Health Authority

The Health and Social Care Act received Royal assent on 27 March 2012. This is the most extensive reorganisation of the National Health Service (NHS) since its inception. The Act abolished Primary Care Trusts (PCTs) and Strategic Health Authorities (SHAs). Funding for commissioning local health services was transferred to Clinical Commissioning Groups (CCGs), which became statutory bodies on 1st April 2013.

Key legislation has been amended so that CCGs have identical safeguarding children duties as those previously applying to PCTs and SHAs – i.e. to have regard to the need to safeguard and promote the welfare of children and to be members of Local Safeguarding Children Boards. The revised edition of Working Together to Safeguard Children (2013) sets out expectations as to how these duties should be fulfilled.

An accountability and assurance framework for safeguarding vulnerable people in the reformed NHS was published in March 2013. The framework reinforces the Government's mandate to the NHS to continue to improve safeguarding practice within the NHS.

CCGs consist of groups of General Practitioners (GPs) acting on behalf of local GPs to commission health services to meet the needs of people registered with practices in their area. The commissioning process includes responsibility for ensuring that children and vulnerable adults are safeguarded.

There are four CCGs in the area covered by Berkshire West - Newbury & District, North & West Reading, South Reading and Wokingham CCGs, which have formed a Federation to work collaboratively. The Chair of the LSCB has met with both Newbury & District CCG and North & West Reading CCG to ensure safeguarding children remains a priority in West Berkshire.

NHS England, formerly the NHS Commissioning Board, is responsible for ensuring oversight of CCGs. This responsibility is devolved to Local Area Teams of NHS England. Berkshire is accountable to NHS England via the Thames Valley Area Team, based in Oxfordshire.

Achievements

- Ensured that all CCG Boards across Berkshire received training in their responsibilities to safeguard and promote the welfare of children;
- Appointed a Nurse Director with CCG Board lead for safeguarding who also represents the CCGs on each of the LSCBs;
- Recruited a Designated Doctor Safeguarding Children, for Berkshire, supported by Consultant Community Paediatricians in Berkshire West;
- Provided safeguarding children training updates to members of Primary Health Care Teams (PHCTs) across Berkshire;
- Introduced a self-assessment audit of safeguarding arrangements in contracts, to be completed by all health services commissioned by the CCGs.

Challenges

- Recruitment of a Named Nurse Safeguarding Children to work with the Named GP to support PHCTs in Berkshire West in their safeguarding activity.
- Work with colleagues in GP practices to improve the contribution of GPs to the child protection process, including the provision of written reports for child protection conferences.

Berkshire Healthcare Foundation Trust (BHFT)

BHFT Achievements

- Revised and Implemented **Child Protection Supervision Policy** which standardized and increased the provision of child protection supervision across BHFT. Those in receipt of specialist supervision include: health visitors (HVs), school nurses (SNs), community children's nurses, Child and Adolescent Mental Health Services (CAMHS), Family Nurse Partnership, and Looked After Children's services (LAC).
- Management of **Domestic Incident Reports** was developed; including the provision of guidance for BHFT staff who receive these police incident reports;
- An agency **safeguarding audit** (Section 11 Children Act 2004) was undertaken and, on scrutiny by the joint Berkshire LSCB Section 11 sub group, was judged to be 'thorough and robust'. This is monitored internally quarterly.
- Audit of quality of Case Reports. The standard of reports was found to be generally high and child focused; a new recording template has been implemented to ensure consistency across the Trust.
- Audit of Child Protection Supervision for Health Visiting, School Nursing and CAMHS clinicians. 76% of HVs/SNs were compliant with the policy; CAMHS was significantly lower. The plan is to increase compliance to 85%.
- Processes are in place to ensure learning from Serious Case Reviews/Incidents is disseminated.
- Domestic Abuse training strategy was developed.
- Training Compliance – single agency training 90%, multi-agency training 79%. A significant improvement from March 2012.
- Establishment of an on call urgent child protection advice line for all BHFT staff.
- Provider of interagency child protection training.
- Improved internal child protection communications through intranet and newsletters.
- Safeguarding and LAC Group, providing leadership and internal assurance.

BHFT Challenges

- Increase compliance with supervision standards – 85%.
- Audit planned – Impact of Safeguarding Training - December 2013.
- Audit planned – Quality of Referrals to Social Care – December 2013.
- Continue raising awareness of domestic abuse as health and safeguarding issues.
- Increase of multi-agency safeguarding training to 85%.
- Promote standardization of assessment processes within CAMHS

Schools

School Achievements

- Schools once again completed their **annual safeguarding and S11 audit** with good results;
- Eleven West Berkshire schools have now completed the '**Safe in our Hands**' anti-bullying self evaluation toolkit and accreditation; this is aimed at both primary and secondary schools with a further target of 15 schools for 2013/14;
- Overall attendance has improved in West Berkshire schools and is above the national average.

School Challenges

- Ensure that staff are recruited safely;
- Ensure that staff are up to date in their safeguarding training;
- Ensure that designated teachers attend the network groups arranged for them.

Youth Offending Team (YOT)

YOT Achievements

- West Berkshire YOT works with some of the most vulnerable young people, often open to Children's Social Care, CAMHs and/or the Edge Young Substance Misusers Service. All young people known to the YOT are assessed in relation to their level of vulnerability, as well as their likelihood of reoffending and risk of committing serious harm to others;
- Safeguarding **procedures** updated;
- Covered **out of hours PACE** from April to October. Fewer young people, particularly Looked After Children, have been detained overnight;
- Work with a placement out of area in developing **restorative approaches** with a Looked After Child. Restorative Justice training provided to a private children's home;
- Developed approaches in response to young people who perpetrate domestic abuse against their parents/carers.

YOT Challenges

- To proactively monitor that young people open to Children's Social Care, in police cells or in the secure estate, are safeguarded, particularly when placed out of area as Looked After Children or remanded or sentenced to custody;
- To be assured that services to those who sexually harm are of a high standard.

Thames Valley Probation Service

Probation Achievements

- In April 2012, the **Thames Valley Probation Safeguarding Children policy** and procedure was reviewed and a Thames Valley Policy statement produced;
- Over 98% of practice staff have either received or are scheduled to attend safeguarding children level 1 or 2 **training**;
- **Disclosure and Barring checks** are completed on all practice staff;
- Updated and rolling out **Advanced Risk of Serious Harm training** to all practitioners and managers.

Probation Challenges

- The **Government's Rehabilitation Programme** - reforms to the structure of probation services and the delivery of community sentences
- Developing a **Family Approach Programme** to link families of those imprisoned or who may be imprisoned as a result of pending court proceedings to appropriate Children Action Team
- The need to continually improve home visits as routine part of offender management supervision on relevant cases on our caseload.

Voluntary Sector

Voluntary Sector Achievements

- Voluntary and Community Sector (VCS) Forum undertook a **survey of voluntary and community organisations** to better understand their safeguarding practices and support needs;
- VCS Forum established a **website** with a prominent safeguarding page:
Link : [WB CYP Forum](#)
Link : [empowering west berkshire](#)
- Regular **newsletters** established;
- The LSCB representative is also a Safe Network champion so is able to signpost to additional resources and information;
- Safe Network bulletins are sent to LSCB members as part of our weekly member updates to provide information and support to the voluntary sector.

Voluntary Sector Challenges

- The VCS Forum has no authority over organisations; it can only endeavour to encourage best safeguarding practices to those organisations registered with it;
- Loss of the Children's Workforce Development Council which provided useful resources for the voluntary sector.

Sub Groups and Task Groups

LSCB Sub-Groups undertake significant work to meet the LSCB's responsibilities. Some of these are co-ordinated across Berkshire or Berkshire West.

Child Death Overview Panel - Berkshire

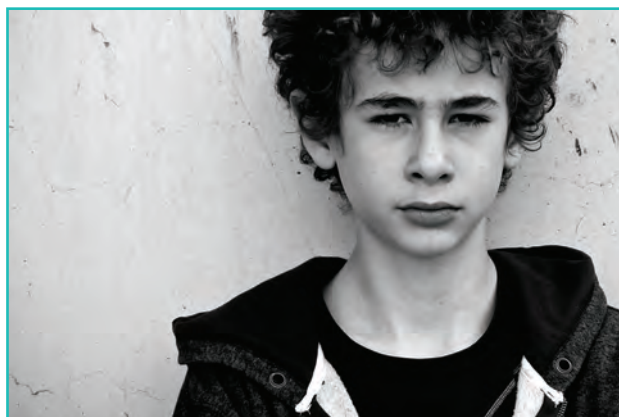
The panel reviews all child deaths in Berkshire and advises the LSCBs of any trends. A newsletter raises awareness of issues; e.g. safer sleeping for babies. There was a reduction in perinatal and neonatal mortality, from 75 in 2011-12 to 34 in 2012-13 across Berkshire. This exceptional reduction was most likely due to the change in status of local district general hospitals to Local Neonatal Units enabling transfer of high-risk neonates to a specialist centre (typically the John Radcliffe Hospital, Oxford). This process appears to have had a genuinely positive impact in reducing neonatal mortality.

The Audit of the 2012/13 Rapid Response to child deaths in Berkshire determined that the response of frontline and Emergency Department staff was generally good, with close multi-agency team working. Specific learning points/next steps highlighted included:

- Communication with out-of-area hospitals and multi-agency teams is an ongoing systemic problem.
- The need to re-emphasise 'Back to Sleep' and parental smoking avoidance advice – particularly among parents from black and minority ethnic backgrounds.
- Multi-agency meetings were held in all cases, and social care assessments were undertaken when appropriate; but visits to the scene of death or health crisis preceding death, were not always made. Consideration should be given to making more such visits.
- There is a need to communicate with non-resident parents following a child's death.

Performance Group – Reading and West Berkshire

The Performance Group meets regularly to review performance information from partner services. This information is set out in the Berkshire dataset. The role of this multi-agency group is to review and challenge the data provided. If there are concerns regarding these key indicators the issues are escalated to the relevant LSCB Executive. The group has also undertaken a review of the dataset to ensure it meets new requirements set out in Working Together 2013 and the needs of the local area.



Policies and Procedures Group - Berkshire

The Berkshire-wide child protection policies and procedures are published online. The Policy and Procedures Group ensures they are regularly updated. Revised procedures include guidance on forced marriage and management of concealed pregnancy, with new links inserted to guidance maintained elsewhere, such as 'Protecting Children and Young People – the Responsibilities of all Doctors' (GMC 2012). Changes have also included improvements to hospital discharge arrangements. The online procedures are being updated in line with the revised Working Together 2013.

Quality and Monitoring Group - West Berkshire

The Quality and Monitoring Group meets every two months to agree the audit programme and review outcomes from partner agency audits. The audit programme covers key areas of safeguarding; audits carried out include case audits, sample studies or, more recently, on-line surveys using survey monkey. Partner agencies are also asked to contribute and bring to the group audits they have completed in their own agency.

Maintaining membership by all partner agencies and ensuring there is capacity to carry out multi-agency audits are on-going challenges.

Safer Recruitment Group- Berkshire West

This group was led by Reading LSCB. Its purpose was to ensure the new arrangement set out in the Protection of Freedoms Act 2012 was both understood and reflected in safer recruitment practice in partner agencies. New guidance has been drafted for all organisations for inclusion in the online Berkshire child protection policies and procedures. This will be updated as new guidance is rolled out by the national Disclosure and Barring Service.

Section 11 Group - Berkshire

All statutory or commissioned organisations that provide services to children and families are responsible for ensuring that they meet Section 11 of the Children Act 2004, in relation to safeguarding and child protection. The pan-Berkshire Section 11 sub group reviewed agency self-audits against these standards. The majority showed that they met and exceeded the minimum standards for safeguarding children. Future plans include establishing links with the Clinical Commissioning Groups and Commissioning Support Unit structure.



Serious Case Review (SCR) Overview Group - West Berkshire

The SCR Overview Group makes recommendations to the LSCB Chair on the need for a Serious Case Review (SCR) when there is a critical incident. There were no SCRs initiated in West Berkshire in 2012–13.

As part of its learning and improvement role, the SCR Overview Group also considers reviews carried out in other areas, both regional and national SCRs or other case reviews and research. Where there is relevant learning, this is shared and cascaded through the most effective route.

Consideration of the Edlington Serious Case Review and subsequent report by Lord Carlile led to a local review of the recommendations by the Education Service.

From April 2013 the Serious Case Review Overview Group will be renamed the Case Review Group. This is in response to Working Together 2013 and reflects the group's role in carrying out reviews using a range of models.

Training Group - Berkshire (West and East)

- Training needs analyses were completed and reported to all boards.
- Courses specific to local need were provided including neglect, domestic abuse, safer care for children of parents with mental health issues, e-safety, and child development. There were 320 attendees from partner agencies.
- A training 'pathway' was published to aid understanding of training required by each staff group and subsequently offered
- Quality assurance of the courses ensured that the content was child focused.
- Staff who attended LSCB courses expressed greater confidence.
- Courses included lessons from serious case reviews and enabled practical skill development.
- The sub group gave partner agencies advice and promoted informal and formal training events between agencies.
- Health agencies opened courses to partner agencies.
- A joint LSCB safeguarding children and adults conference was provided for all partner agencies in Berkshire West on the impact and effects of neglect.

Challenges:

- Monitoring the quality of single agency safeguarding training.
- More audits on the quality of training may be required; which will impact on resources.
- Multi agency training compliance in Berkshire West, ensuring all agencies respond.

Please note full sub-group reports can be obtained on request from the LSCB Clerk cfletcher@westberks.gov.uk

Membership of sub-groups continues to be monitored to ensure all partners are represented.

Conclusions

Overall this has been a busy year for all the partners of the LSCB. The changing face of the NHS has seen membership changes and new members join. Work will continue to ensure that all members are clear on their roles and responsibilities.

Increasing numbers of children with child protection plans and those who become looked after make it crucial that LSCB partners and their agencies work together effectively to address the needs of these vulnerable groups.

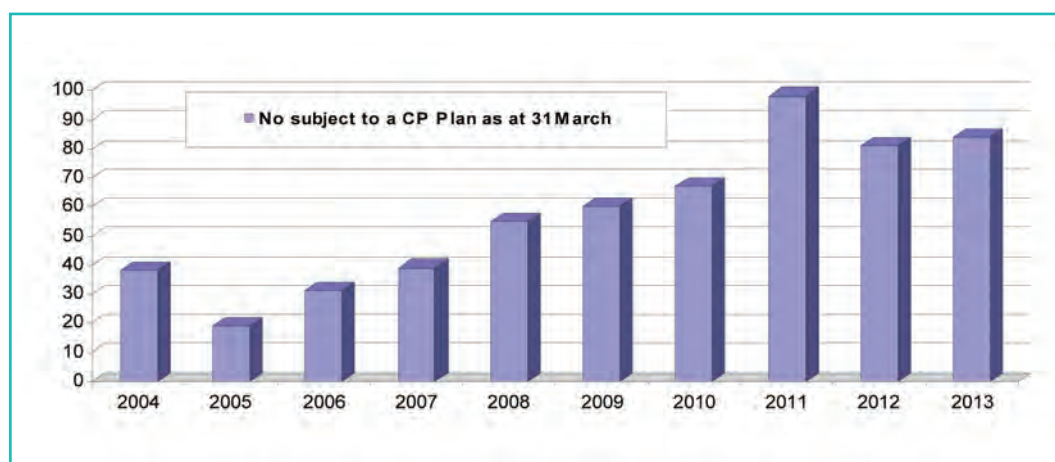
Working Together 2013 is a key document and will take time to establish the changes required; the LSCB will continue to challenge agencies to ensure the services they provide are in line with this guidance.



Appendix A - Child Protection Data

Total of Children and Young People subject to a Child Protection Plan by Year

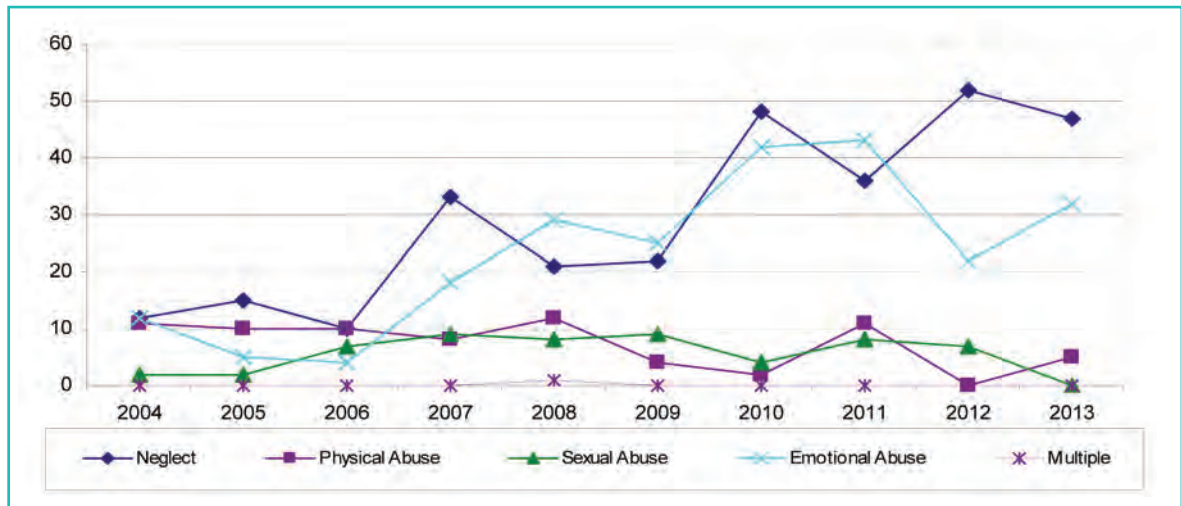
Year	2004	2005	2006	2007	2008	2009	2010	2011	2012	2013
No subject to a CP Plan as at 31 March	38	19	31	39	55	60	67	98	81	84



The total of young people subject to child protection plans in West Berkshire as at 31 March 2013 was 84. This is a rate of 22 per 10,000 population aged under 18 which is below the national average of 39 per 10,000 and slightly below our comparator group of 26 per 10,000 (March 2011). The number of young people for 2013 represents a 4% increase over the previous year.

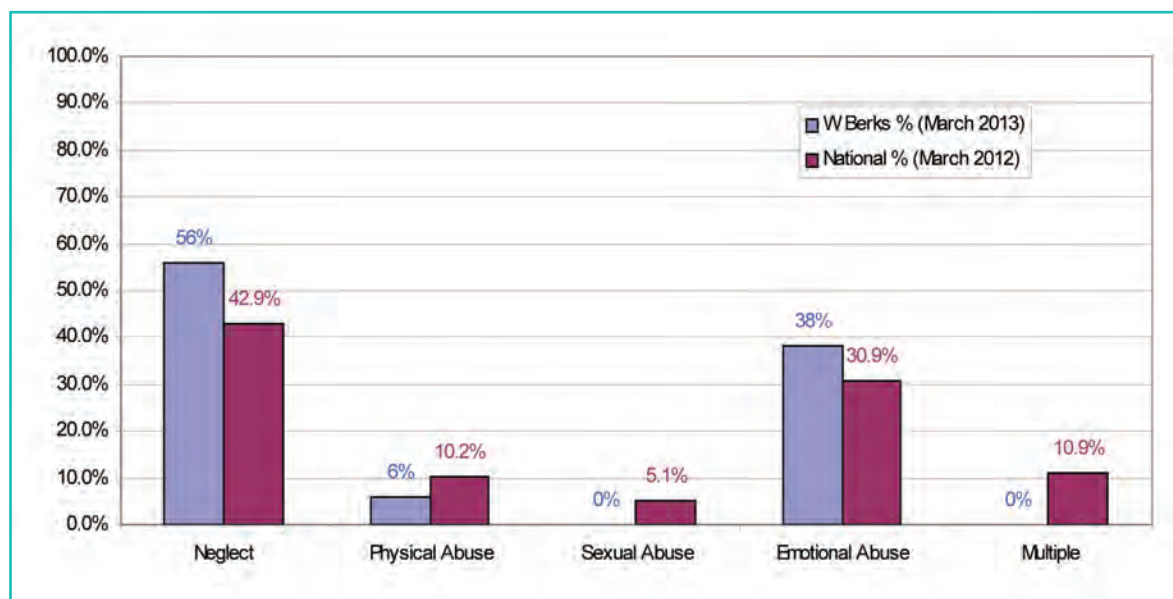
Reasons for CP Plan Trends

Year (as at 31 March)	2004	2005	2006	2007	2008	2009	2010	2011	2012	2013
Neglect	12	15	10	33	21	22	48	36	52	47
Physical Abuse	11	10	10	8	12	4	2	11	0	5
Sexual Abuse	2	2	7	9	8	9	4	8	7	0
Emotional Abuse	12	5	4	18	29	25	42	43	22	32
Multiple	0	0	0	0	1	0	0	0	0	0
Total Reasons for CP Plan	37	32	31	68	71	60	96	98	81	84



As at 31 March 2013 Neglect continued to be the most frequent reason for Child Protection Plans, showing a general upwards trend over the entire period. Emotional Abuse on the other hand, which had shown a drop in numbers in 2011/12, is showing an increase in the 2012/13 year. In 2012/13 there was a slight increase in the number of CP Plans made for the category of Physical Abuse, which had peaked in 2011/12 but was zero in 2012/13. There were no sexual abuse CP Cases recorded.

National and Local Reasons for CP Plan Percentage Trends



The above graph, compares West Berkshire's Reasons (31 March 2013) for CP Plans with National (2011/12) Percentages. In the case of "Neglect" West Berks is greater than the national average (56% and 42.9% respectively) In the instance of "Emotional Abuse", W Berkshire is also higher than national figures, with West Berkshire being 38% and the national average 30.9%. Sexual Abuse for West Berks (0%) as opposed to the national figure of 5.1%. Physical Abuse is slightly lower than the national average (6% for W Berkshire as opposed to 10% for the national figure)

Children subject to Protection Plans Profile as at 31 March 2013

As at 31st March 2013, there were 84 children subject to Child Protection Plans. There were 36 boys (43%), 44 girls (52%) and 4 unborn children (5%). Nationally, 49.7% of those subject to a CP Plan are male, and 48.1% female.

Under 1's accounted for 14%; 1-4's for 26%; 5-9's for 26%; 10-15's for 27% and 16+ for 1%. (unborn 5%).

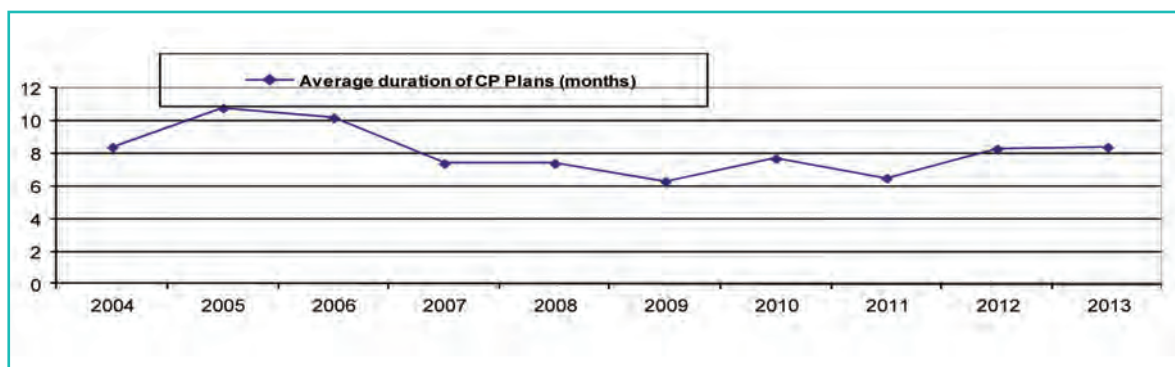
23% of children who were subjects of child protection plans at 31 March 2013 were from an ethnic minority. This compares with 11.7% of young people in West Berkshire's schools from ethnic minorities.

Children subject to a second or subsequent CP Plan

In 2012/13, West Berkshire made 27 (22.7%) children subject to a 2nd or subsequent CP Plan. The national average for the period 2011/12 was 13.8%. This is an increase over the previous year when we reported 19.6% subject to a 2nd CP Plan.

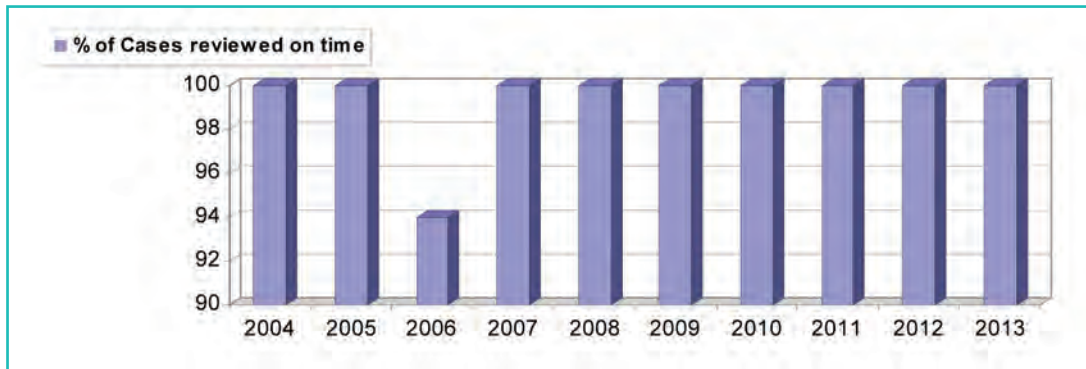
Duration of CP Plans by Time for Children subject to a CP Plan

	2004	2005	2006	2007	2008	2009	2010	2011	2012	2013
Less than 3 months	6	8	1	17	16	35	25	33	31	24
3 months - 6 months	3	6	5	7	11	14	12	12	25	19
6 months - 12 months	27	8	8	27	14	19	38	56	39	55
12 months - 24 months	10	29	4	5	13	15	18	12	26	25
> 2 years	0	0	1	4	0	0	0	1	2	3
Total CP Plans Endings	46	51	19	60	54	83	93	114	123	126
Average duration of CP Plans (months)	8.4	10.8	10.2	7.4	7.4	6.3	7.7	6.5	8.3	8.4



Percentage of Child Protection Cases Reviewed in Timescale

Year	2004	2005	2006	2007	2008	2009	2010	2011	2012	2013
% of Cases reviewed on time	100	100	94	100	100	100	100	100	100	100



In 2013, 100 per cent of Child Protection cases were reviewed on time.

Appendix B - Training

Safeguarding training is essential to ensure staff and volunteers are kept up to date with legislation and information.

All agencies have a responsibility to provide their staff and volunteers with suitable training that is appropriate to their role.

The West Berkshire training team provide training at Universal level for Social Care, Early Years team, schools and the voluntary sector. This first introduction to safeguarding explains what signs and symptoms to look for and who to report to. They are also responsible for administering the courses on the LSCB programme.

Local Authority safeguarding training which took place in West Berkshire 2012-2013

Training delivered for schools		
CP Universal	2 courses ran centrally	24 people trained
In house (school site)	55 courses ran in-house	960 people trained
Designated Persons	3 courses ran centrally	112 people trained
Training delivered by the Social Care and Corporate Training Team		
Universal training	Children's Services targeted	102 people trained
Targeted Safeguarding		437 people trained
LSCB Multi agency programme		125 people trained

The LSCB provides a multi-agency programme designed to cover key safeguarding subjects.

To ensure that training meets the desired objectives and that it is effective, the training is quality assured usually by a member of the training sub group.

Attendees at each training event are asked to complete an evaluation form to ensure it meets their needs.

The information below demonstrates the impact of safeguarding training on attendees at the LSCB training events. Attendees are asked to score their knowledge before and after the event, each of the events records an increase in knowledge.

Course Title	Average of Knowledge before Session (score 10 to 1)	Average of Knowledge after Session (score 10 to 1)
Child Development & Safeguarding - 13/7/12	6.1	7.9
A Shared Responsibility - 12/9/12	7.2	8.2
Neglect and Emotional Abuse - 11/10/12	6.3	8.3
Safeguarding Children of Parents with LD - 18/12/12	5.5	8.0
Safeguarding Children in Domestic Abuse - 1/2/13	5.4	7.2
A Shared Responsibility - 6/3/13	6.4	8.4
A Shared Responsibility - 15/3/13	5.1	7.8
A Shared Responsibility - 25/3/13	4.4	7.5

Appendix C - Membership at April 2013

Name	Role
Gabriel Amahwe	Operational Director Berkshire West, Thames Valley Probation
Vanessa Anderson	Lay member
Stephen Barber	Independent Chair
Robert Bradshaw	Service Manager, West Berkshire Council
Debbie Daly	Nurse Director, Berkshire West CCG Federation
Mark Evans	Head of Children's Services, West Berkshire Council
Leila Ferguson	Lay member
Peter Gale	Deputy Principal, Mary Hare School
Kevin Gibbs	Head of Service, CAF/CASS
June Graves	Head of Care Commissioning, Housing and Safeguarding, West Berkshire Council
Andrea Griffiths/ Liz Housden	Headteacher Hungerford Primary School/Headteacher St Finians
Ros Haynes	Service Improvement Manager, Safeguarding, West Berkshire Council
Antony Heselton	Clinical Development Manager, South Central Ambulance Service
Jon Hewitt	Headteacher, The Castle School
Georgia Jackson	Consultant Community Paediatrician, Royal Berkshire NHS Foundation Trust
Julie Kerry	Associate Director for Patient Experience, Thames Valley Area Team, NHS South of England
Rosemary Lilley	Voluntary sector representative
Linde Melhuish	Principal, Padworth College
Rita Morrison	Head of Mental Health Services for West Berkshire
Ian Mundy	Locality Director (West Berks), Berkshire Healthcare NHS Foundation Trust
Irene Neill	Portfolio Holder Children and Young people, West Berkshire Council
Zoe Partridge	Personal and Family Support Worker, SSAFA Forces Help
Davy Pearson	Manager, Youth Offending Team
Ian Pearson	Head of Education Service, West Berkshire Council
Karen Pottinger	Principal Education Welfare Officer, West Berkshire Council
Susan Powell	Safer Communities Partnership Team Manager, West Berkshire Council
Robin Rickard	Superintendent, Thames Valley Police
Janet Scott	Service Manager, West Berkshire Council
Janice Schofield	Faith Sector Representative
Jenny Selim	Designated Nurse Child Protection, NHS Berkshire
Lorna Sherlock	Tutorial Team Leader, Newbury College
Maureen Sims	Deputy Headteacher, St Bartholomew's Secondary School
Rachael Wardell	Corporate Director, Communities (statutory Director of Children's Services), West Berkshire Council
Ian Wootton	Commissioning Manager Substance Misuse, West Berkshire Council

Appendix D - Financial information

The budget is monitored by the Business Manager and reports are provided to each LSCB meeting. The majority of the budget is spent on staffing to support the work of the Board.

The LSCB budget 2012-2013 is made up of contributions from the Local Authority, the PCT, Police, Probation, CAFCASS and Berkshire Healthcare Foundation Trust.

Supplies and services include expenditure for the cost of an independent Chair, updates of the child protection procedures and the costs associated with administering the LSCB training programme and the annual conference. This also covers any printing costs for publicity materials and leaflets.

This part of the budget also pays for a part time CDOP administrator (.6). This post is funded jointly by all the Berkshire LSCBs and is responsible for notifications of child deaths across Berkshire.

In addition a small amount is spent under premises to cover the hire of meeting rooms, refreshments and venues for LSCB activities and meetings.

The budget was underspent due to a vacancy for a LSCB business support officer which took several months to recruit. A reserve is also kept in the event of a serious case review being commissioned.

Income and Expenditure 2012 – 2013

Income	£
Local Authority (Including Child Death Review)	103,235.00
PCT	20,000.00
Police	2000.00
Probation	895.00
CAFCASS	550.00
Berkshire Healthcare Foundation Trust	1000.00
TOTAL	127,680.00

Expenditure	£
Employees	78,261.00
Supplies and Services	22,068.00
Premises	638.00
TOTAL	100967.00

Appendix E - List of acronyms

BHFT	Berkshire Healthcare NHS Foundation Trust
CAF	Common Assessment Framework
CAFCASS	Children and Family Court Advisory and Support Service
CAMHS	Child and Adolescent Mental Health Services
CCG	Clinical Commissioning Group
CDOP	Child Death Overview Panel
CSE	Child sexual exploitation
DBS	Disclosure and Barring Service
DfE	Department for Education
EWO	Education Welfare Officer
FGC	Family Group Conference
ISVA	Independent Sexual Violence Advisors
JSNA	Joint Strategic Needs Assessment
LAC	Looked After Child
LSCB	Local Safeguarding Children Board
MAPPA	Multi-Agency Public Protection Arrangements
MARAC	Multi-Agency Risk Assessment Conference
PCT	Primary Care Trust
SARC	Sexual Assault Referral Centre
SCP	Safer Communities Partnership
SCR	Serious Case Review
SHIP	Sexual Harm Intervention Project
VCS	Voluntary and Community Sector
YOT	Youth Offending Team

